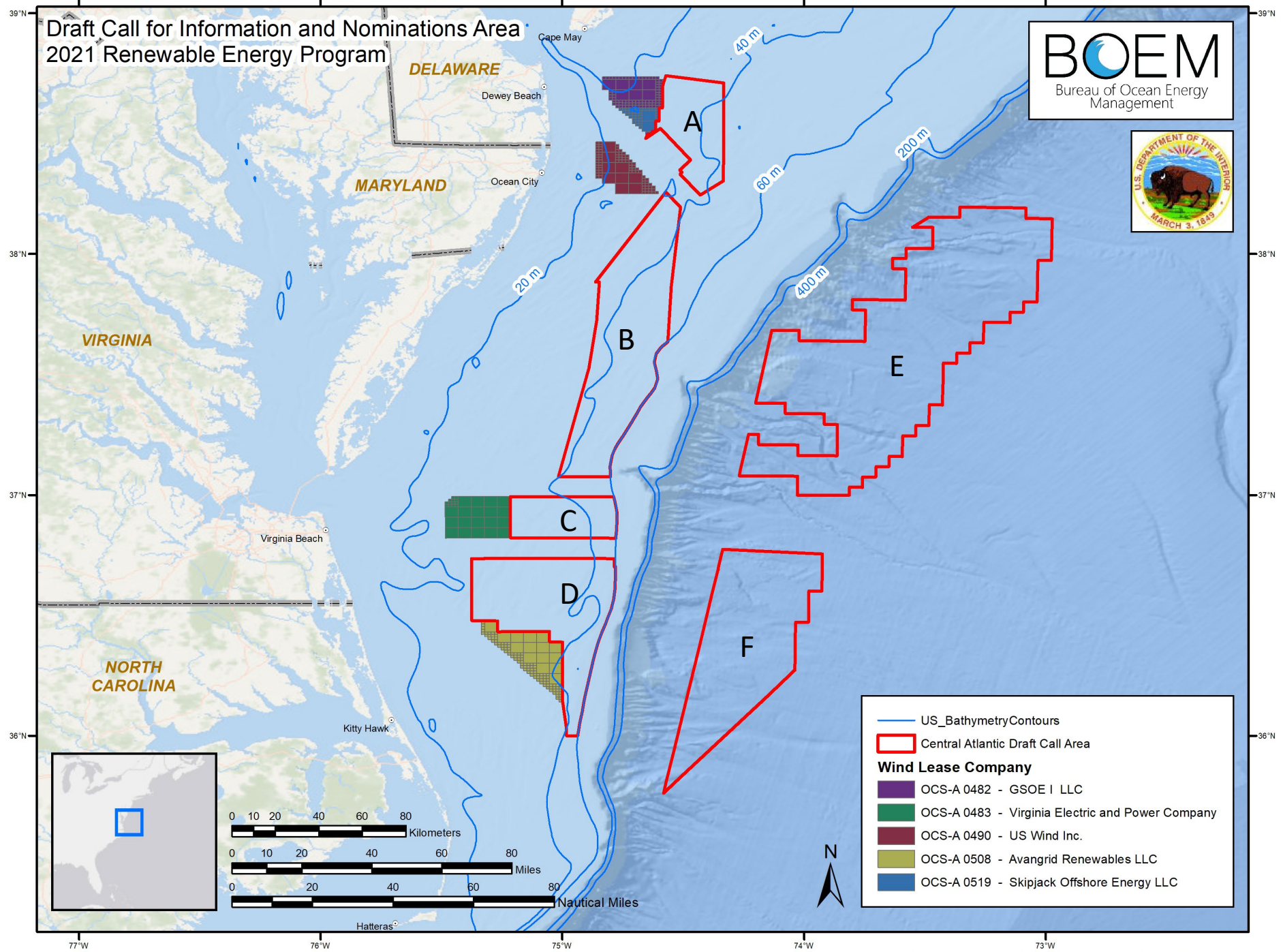
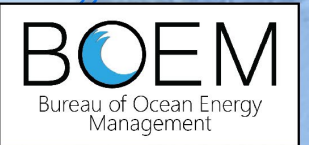


# Draft Call for Information and Nominations Area 2021 Renewable Energy Program

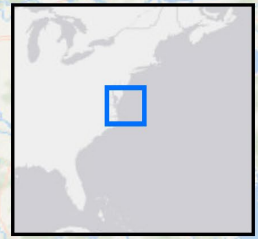
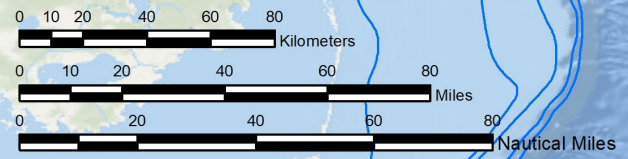


— US\_BathymetryContours

▭ Central Atlantic Draft Call Area

**Wind Lease Company**

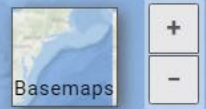
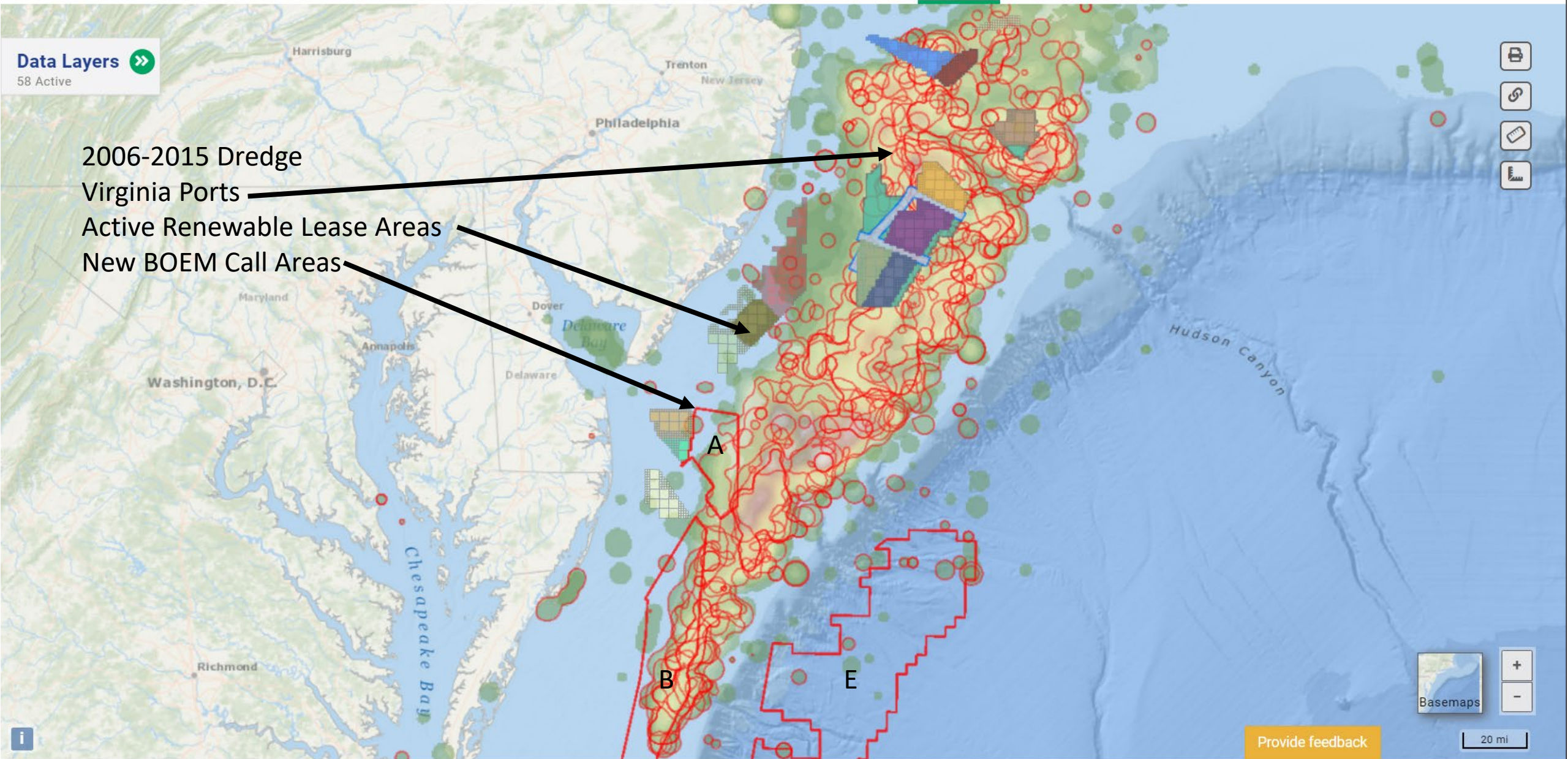
- ▭ OCS-A 0482 - GSOE I LLC
- ▭ OCS-A 0483 - Virginia Electric and Power Company
- ▭ OCS-A 0490 - US Wind Inc.
- ▭ OCS-A 0508 - Avangrid Renewables LLC
- ▭ OCS-A 0519 - Skipjack Offshore Energy LLC





Data Layers 58 Active

2006-2015 Dredge  
Virginia Ports  
Active Renewable Lease Areas  
New BOEM Call Areas



Provide feedback

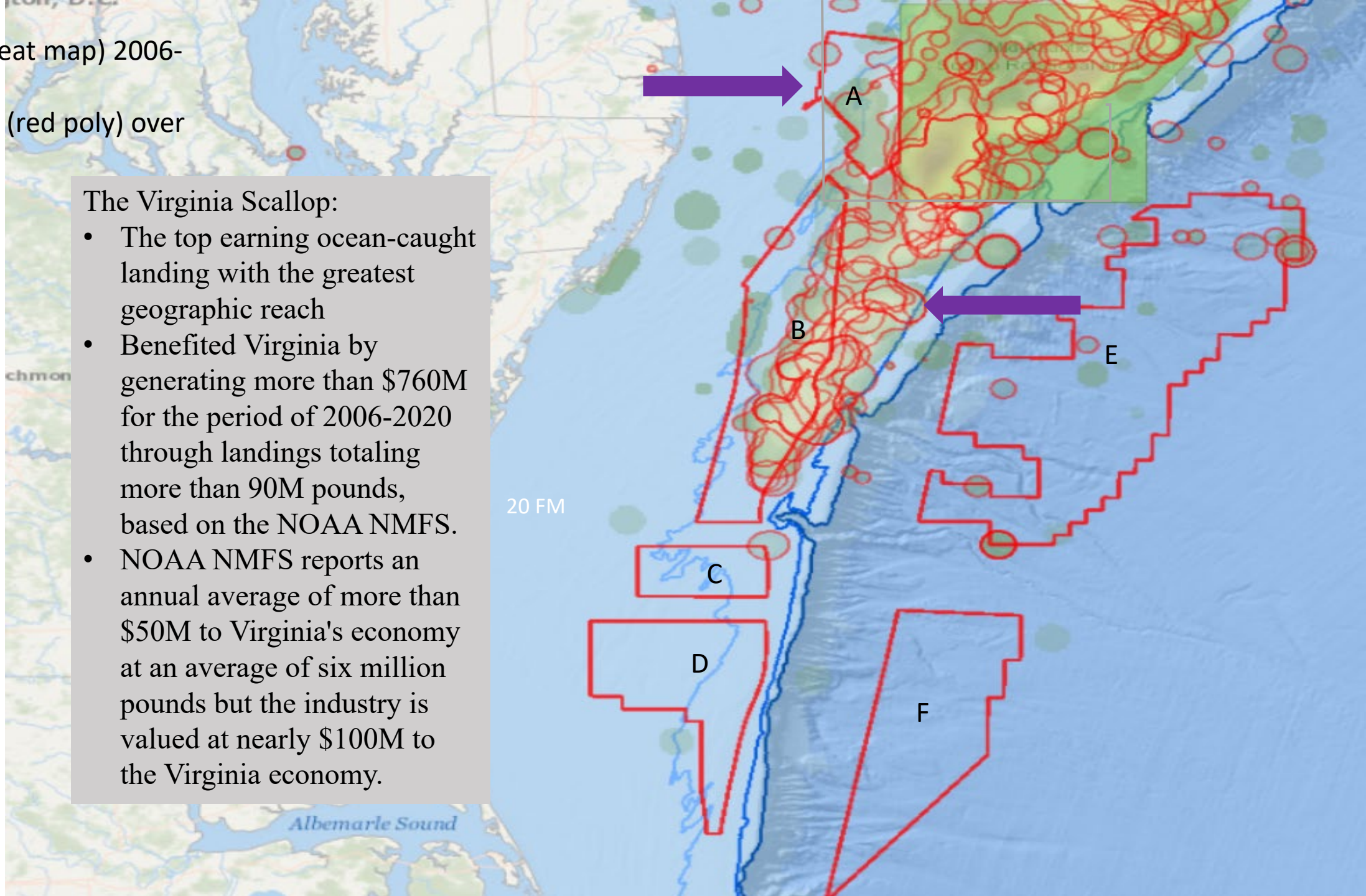
20 mi



Dredge (green heat map) 2006-2015 and All Virginia Ports (red poly) over reported effort

The Virginia Scallop:

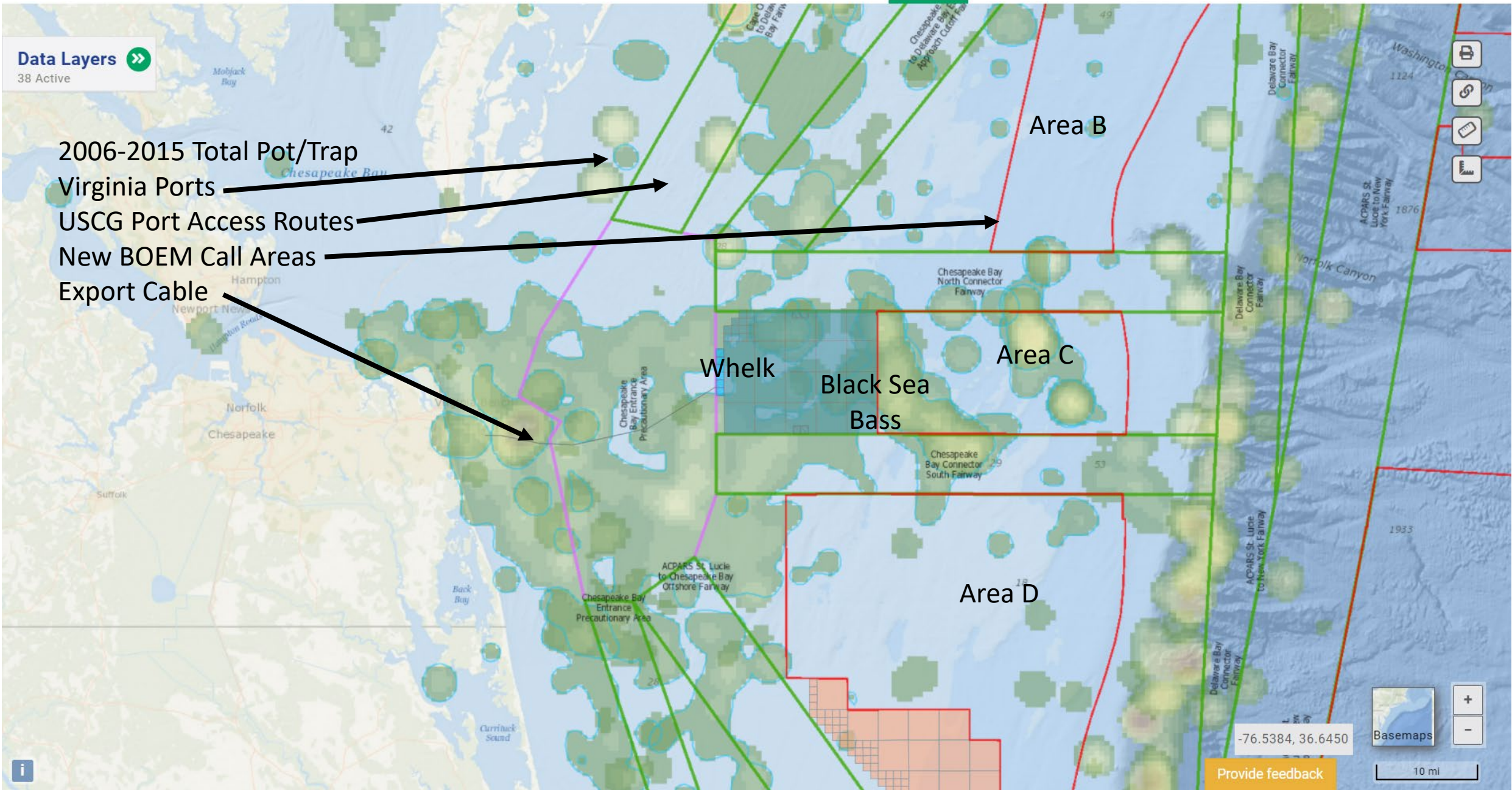
- The top earning ocean-caught landing with the greatest geographic reach
- Benefited Virginia by generating more than \$760M for the period of 2006-2020 through landings totaling more than 90M pounds, based on the NOAA NMFS.
- NOAA NMFS reports an annual average of more than \$50M to Virginia's economy at an average of six million pounds but the industry is valued at nearly \$100M to the Virginia economy.





Data Layers 38 Active

- 2006-2015 Total Pot/Trap
- Virginia Ports
- USCG Port Access Routes
- New BOEM Call Areas
- Export Cable



-76.5384, 36.6450

Basemaps + -

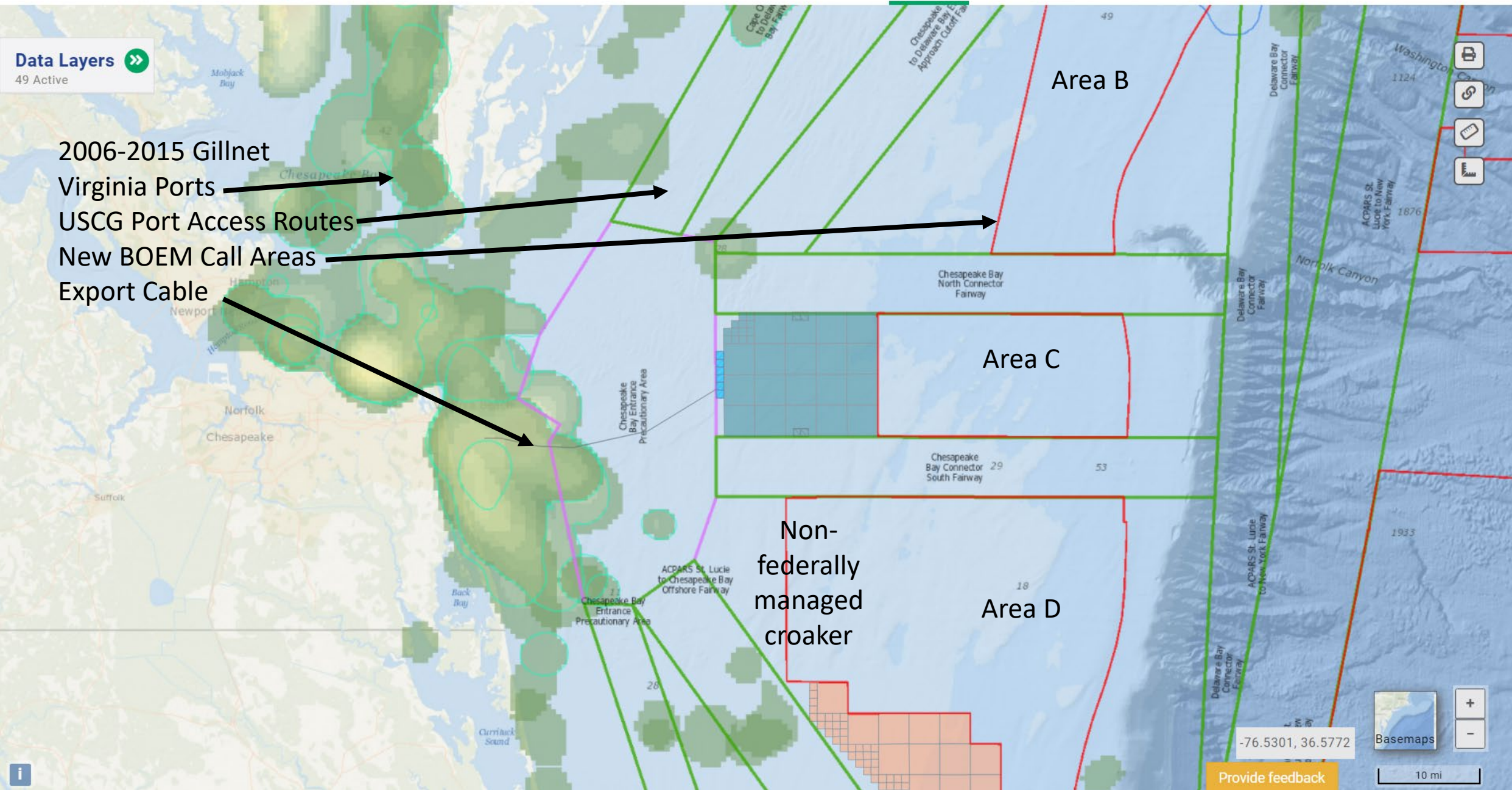
Provide feedback

10 mi



Data Layers 49 Active

2006-2015 Gillnet  
Virginia Ports  
USCG Port Access Routes  
New BOEM Call Areas  
Export Cable



Map navigation icons: Print, Share, Home, Full Screen, Measure.

Basemaps zoom controls (+, -) and a 10 mi scale bar.

-76.5301, 36.5772

Provide feedback



