

100' Depth

100' Depth

WK Min  
 I-110  
 Bl Ac  
 Bn Sach  
 Loc Sgs

I-11  
 Bl Ac  
 Loc Sach  
 Bn Sach  
 Bl Ac

Bl Ac  
 1" Fa 45°  
 4' Py Min  
 Sach Mass

Gen Bl Ac

Sach Mass Sgs

Loc Bl Ac

Loc Sach

Bl Ac

Bn Sach

Deed

Loc Sach

Few Sg

Bl Ac

J-113  
 Dd  
 Bn Sach  
 Psqs

Bn Sach

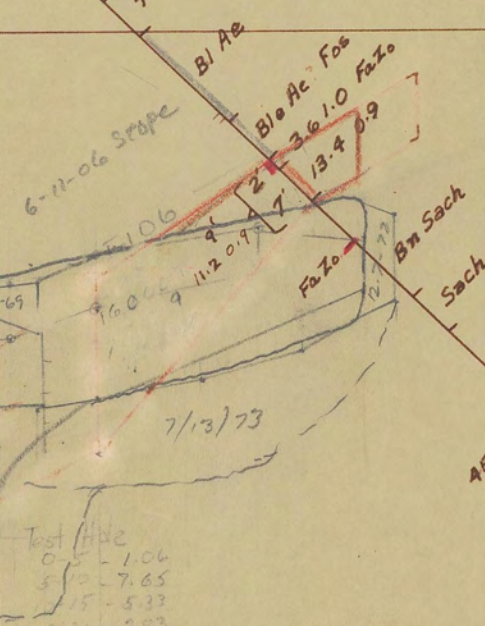
Bn Sach

J-112  
 Bn Sach

Unproved  
 2150 T  
 4.3, 0.2  
 7.26.79

3 13.6 (-3.6) 0.1  
 4 Dead  
 9.3 (-2.0) 0.1  
 6 2.6 (-1.9) 0.1

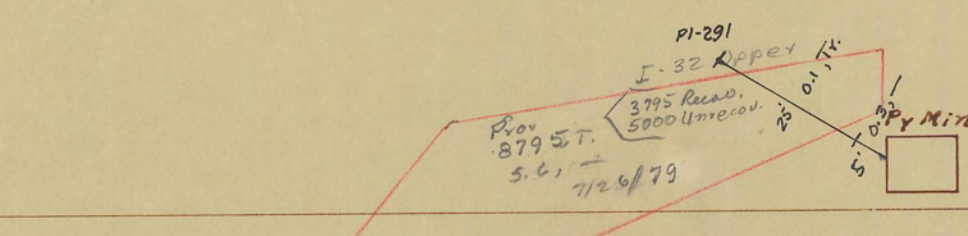
2" Fa 60°



Prov. Unrecd  
 1000 T  
 5.7, 0.9  
 7/26/79

600' to N.I.B.L.

300' to N.I.B.L.



J-773  
 0.1 - 7.0  
 0.1 - 1.0  
 0.1 - 1.0  
 0.1 - 1.0  
 Ad. H Gr  
 Ore G Mass

Unproved  
 4200 T  
 3.9  
 7/26/79

Unproved  
 4900 T  
 3.6  
 7/26/79

3 LEVEL

1900

5 LEVEL

1700

6 LEVEL

1600

1500

POSTED TO DATE \_\_\_\_\_  
 \_\_\_\_\_  
 \_\_\_\_\_

THE NEW JERSEY ZINC COMPANY

DRAWN H.M.M. DATE 2/1/57  
 TRACED \_\_\_\_\_ SCALE 1" = 30'

**STOPE SECTION**  
**08 No. 3**

DISTRICT **IVANHOE, VA.** 7 LEVEL  
 FILE NO. \_\_\_\_\_

