

2000'

3 LEV. 1900'

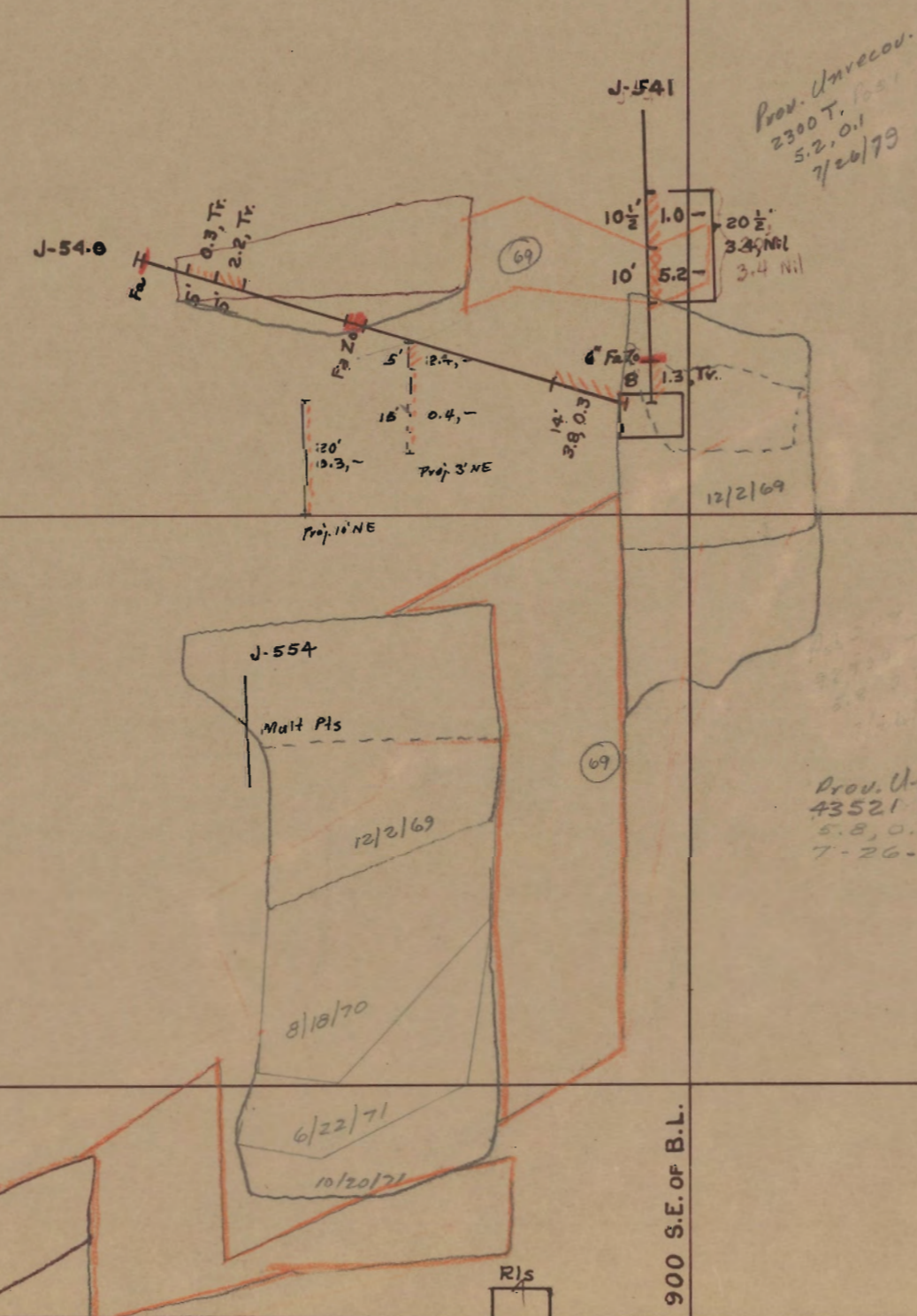
4 LEV. 1800'

5 LEV. 1700'

6 LEV. 1600'

1500'

7 LEV.



600' S.E. OF B.L.

900' S.E. OF B.L.

1200' S.E. OF B.L.

POSTED TO DATE \_\_\_\_\_  
 \_\_\_\_\_  
 \_\_\_\_\_

THE NEW JERSEY ZINC COMPANY

DRAWN H. M. M. DATE \_\_\_\_\_  
 TRACED SCALE 1" = 30'

STOPE SECTION  
41 No. 4

DISTRICT IVANHOE, VA.  
 FILE NO. 76B-5471

B-016