

OBSOLETE
WAS NOT DRIVEN
SEE 7GB-3909

1500' NW of B.L.

SEE CHANGE
of PROPOSAL
FLB

11-25-84 S.L.W.C
N-27 1/4°-W
5x7
+13°-24'
20'

11-25-84 CHUTE RAISE
N-76 1/2°-W
4x4
+54°-28'
55' SCOPS

11-25-84 Manway R&C
N-27 1/4°-W
4x4
+51°-09'
42'

11-25-84 CHUTE RAISE
11-25-84 MANWAY RAISE
11-25-84 S.L. N.W

11-25-84 STOPE
ELEV. = 1200'
12-17-70
POD-HMM 4

THIS DRAWING IN DESIGN AND DETAIL IS OUR PROPERTY AND
MUST NOT BE USED EXCEPT IN CONNECTION WITH OUR WORK.
ALL RIGHTS OF DESIGN AND INVENTION ARE RESERVED. THIS
DRAWING MUST BE RETURNED TO BERTHA MINERAL DIVISION
THE NEW JERSEY ZINC COMPANY, AUSTINVILLE, VA.

BERTHA MINERAL DIVISION	
THE NEW JERSEY ZINC COMPANY	
DATE 6-7-70	SCALE 1" = 30'
11-25-84 STOPE	
DR. POD	TR. POD
CHARGE	

SCALE: 1" = 30'
DRN.: 1 POD
DATE: JANUARY 14, 1971

7GB-3887

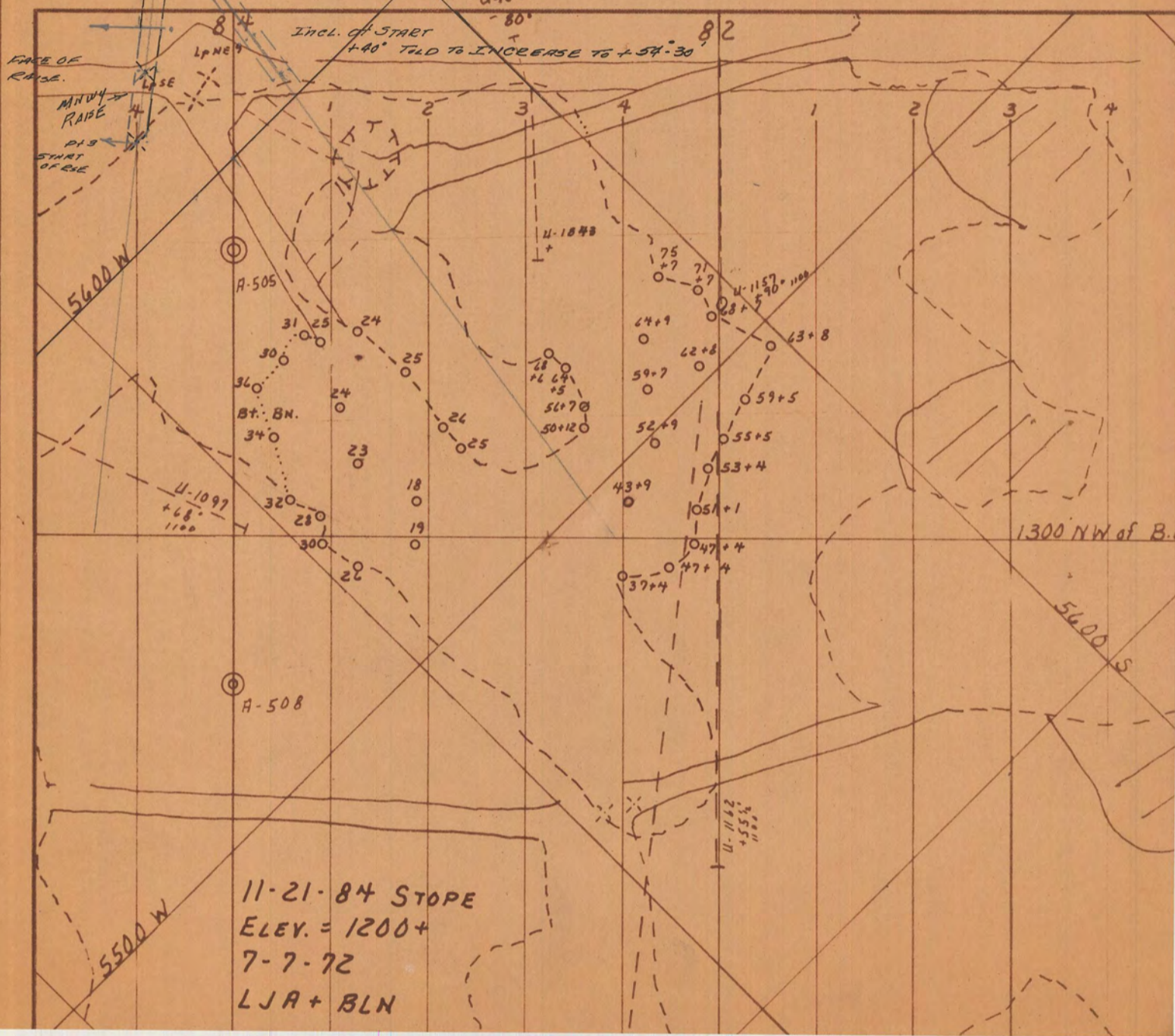
Note: Will turn last sl end. right.
 Proposed BRG.
 11-27 1/2 W.

11-25-84-SL
 N-37°-12'-W
 +13'-24'
 20 x 517 SL

ORE RISE

PROPOSED N-76 1/2 W TOLD TO PULL BACK TO PROPOSED BRG.
 STRATE N-38 W U-1844

Incl. of START
 +40' TOLD TO INCREASE TO +57.30



11-21-84 STOPE
 ELEV. = 1200+
 7-7-72
 LJA + BLN

AUSTINVILLE:

- 11-25-84 CHUTE RAISE
- 11-25-84 MANWAY RAISE
- 11-25-84 S.L. NW

11-25-84 SL NW
 N-27 1/4°-W
 5 x 7
 +13°-24'
 20'

+13°-24'

ELEV. = 1300

ELEV. = 1305

1300'

11-25-84 MANWAY RAISE
 N-27 1/4°-W
 4 x 4
 +51°-09'
 42'

ELEV. = 1264

SEC. B-C

11-25-84 CHUTE RAISE
 N-76 1/2°-W
 +54°-28'
 55'
 4 x 4

+54°-28'

ELEV. = 1256

SEC. A-B

SEC. E-D

1200'

84P

SCALE: 1"=30'

DRN: P.O.D.

DATE: JANUARY 14, 1971

76B-3887

