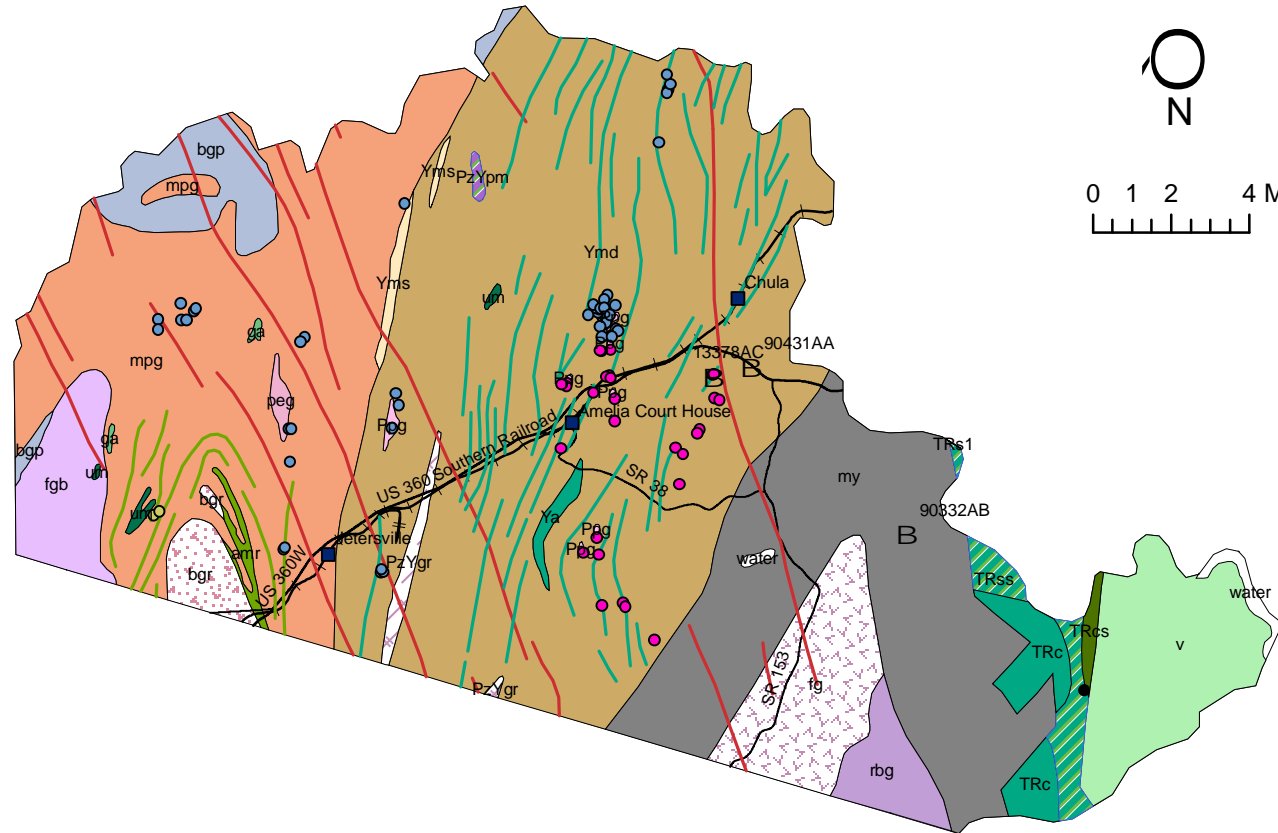


Geology and Mineral Resources, Amelia County, Virginia

Geology - 1:500,000 Scale

- d - diabase (Jurassic)
- Ya - amphibolite layers
- amr - amphibolite layers
- TRc - conglomerate
- TRcs - siltstone, shale, coal
- TRs1 - arkosic sandstone
- TRss - sandstone, shale
- fg - gneissic granite
- rbg - biotite gneiss
- v - metavolcanic rocks
- my - mylonite
- Ppg - pegmatite
- PzYgr - granite gneiss
- PzYpm - quartzofeldspathic gneiss
- Yms - muscovite schist & gneiss
- Ya - amphibolite
- Ymd - garnet-biotite gneiss
- peg - granite pegmatite
- um - ultramafic rocks
- ga - gabbro
- bgr - Burkeville pluton
- fgb - biotite granite gneiss
- amr - amphibolite
- mpg - migmatitic paragneiss
- bgp - porphyroblastic biotite gneiss



Active and Historical mines and prospects 1:24,000 Scale

- | | |
|--|--|
| B Active mines | City or Town |
| ● coal | Primary Roads |
| ● mica | Railroads |
| ● pegmatite | |
| ● soapstone | |

Disclaimer

This dataset is provided as is. Variable conditions arising from physical sources used to develop the data may be reflected in the data. It is designed for use at the designated scale and should not be enlarged or used for making site-specific decisions. Users must be aware of possible errors in scale, resolution, rectification, positional accuracy, development methodology, and other circumstances specific to this dataset when using information contained herein. Distribution of this map is intended for information purposes and should not be considered authoritative for navigational, engineering, legal or other site-specific uses.