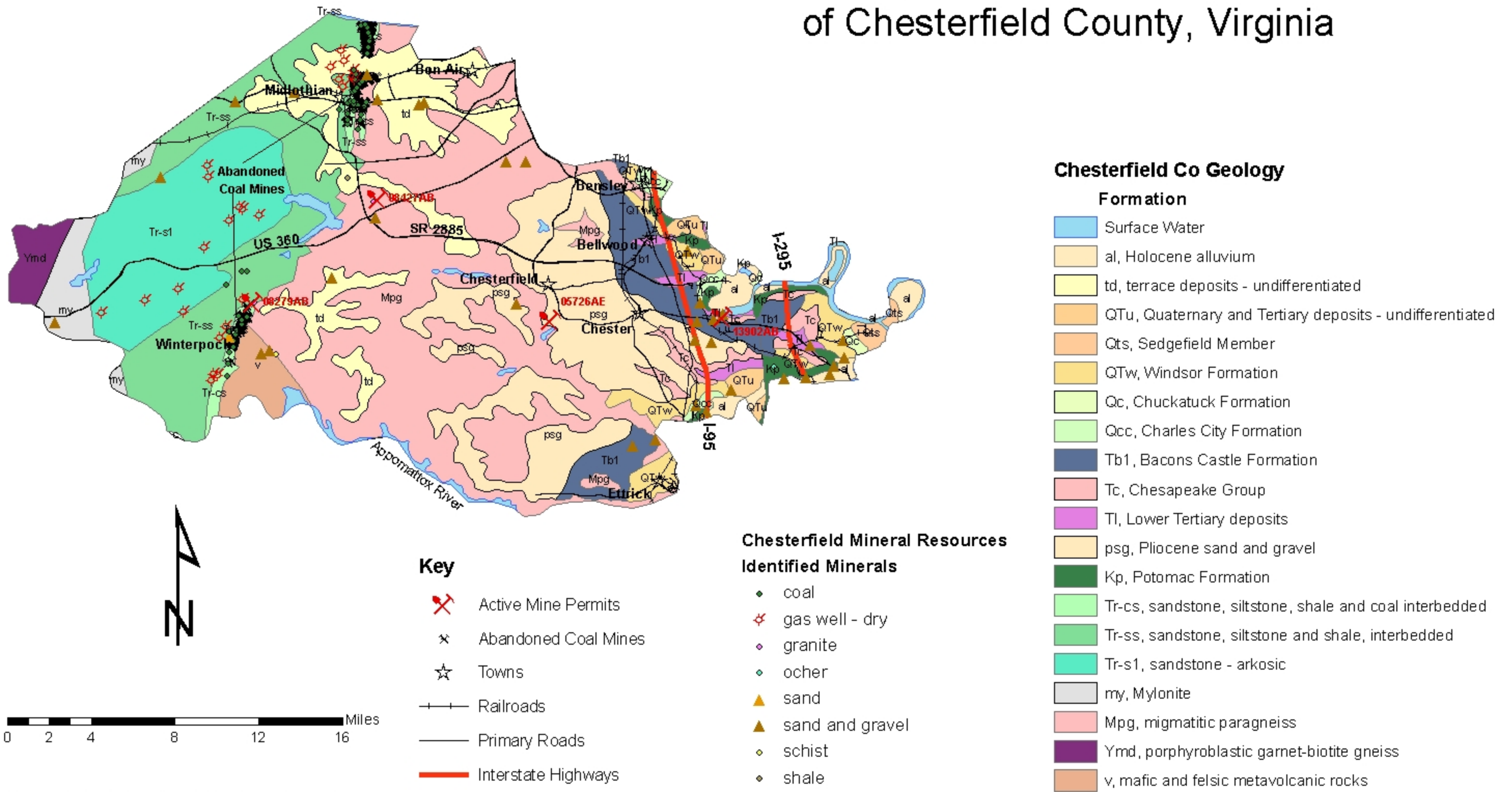


Figure 1

Geology and Mineral Resources of Chesterfield County, Virginia



Geologic data and mineral resource locations presented on this map are based on current information in the records of the VA Department of Mines, Minerals, and Energy (DMME). The locations and extent of many of the historic mine sites have been confirmed by field investigations, yet for others, the locations may be approximate and subject to change. DMME is continuing to modify the datasets included on this map, and the user is responsible for ensuring that they have the most current information. This map is designed for use at the designated scale and should not be enlarged or used for making site-specific decisions. The user should be aware of possible errors in scale, resolution, and positional accuracy. Distribution of this map is intended for informational purposes and should not be considered authoritative for navigation, engineering, legal or other site-specific uses.

Data Sources:
 Geology: Virginia Division of Mineral Resources (DMR), 1993, Geologic Map of Virginia, scale 1:500,000
 Active Mine Locations: Virginia Division of Mineral Mining.
 Mineral Resources: DMR Mineral Resources of Virginia Database

Virginia Department of Mines, Minerals, and Energy
 Division of Mineral Resources
 Charlottesville, VA
 4 October 2007