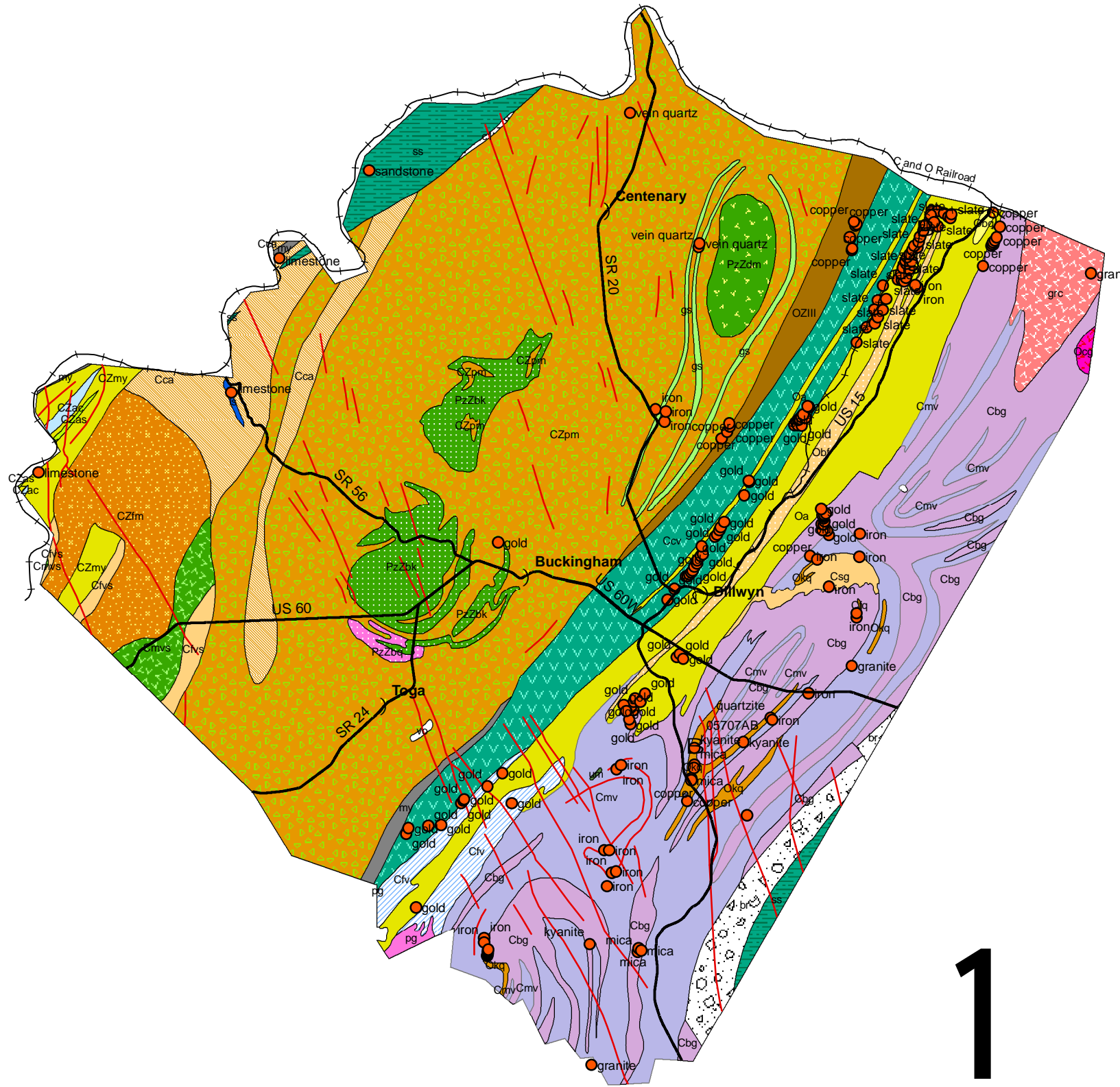


GEOLOGY AND MINERAL RESOURCES OF BUCKINGHAM COUNTY, VIRGINIA

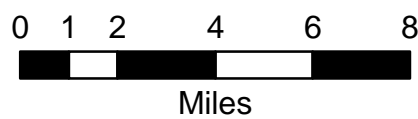


Geology (see expanded explanation)

- diabase dike
- ◻ c1 - conglomerate, carbonate clasts
- ◻ br - breccia, mixed clasts
- ss - sandstone and siltstone
- Oa - Arvonian Formation, slate and porphyroblastic schist
- Obq - Arvonian Formation, Bremo quartzite
- Okq - Arvonian Formation, kyanite quartzite and schist
- Obf - Buffards Formation
- Ocg - Columbia pluton
- Ccv - Chopawamsic Formation, undivided
- Cfv - foliated felsite
- Cmv - amphibolite, hornblende-biotite gneiss, and schist
- Cbg - quartzofeldspathic biotite gneiss
- Cfq - ferruginous quartzite
- Csg - quartz muscovite schist and gneiss
- grc - Carysbrook pluton, biotite granite
- pg - plagiogranite
- um - ultramafic rocks
- my - mylonite
- Cca - Candler Formation, phyllite and schist
- ls - Candler Formation, limestone
- CZas - Alligator Back Formation, actinolite schist
- CZac - Alligator Back Formation, banded marble
- CZmy - Alligator Back Formation, feldspathic metagraywacke
- CZfm - Fork Mountain Formation
- OZIII - Mine Run complex, melange zone III
- vo - exotic blocks within melange
- CZpm - metagraywacke, quartzose schist, and melange
- Cfvs - felsic metatuff, mica schist, and gneiss
- Cmvs - greenstone or amphibole gneiss
- PzZdm - Diana Mills complex, hornblende metadiorite
- PzZbq - Buckingham complex, quartz diorite
- PzZbk - Buckingham complex, metamorphosed mafic and ultramafics
- gs - actinolite schist metabasalt

Mineral Resources

- Ⓟ Active Mine (permit #)
- Historic Mine (commodity)



1

Geologic data and mineral resource locations presented on this map are based on current information in the records of the VA Department of Mines, Minerals, and Energy (DMME). The locations and extent of many of the historic mine sites have been confirmed by field investigations, yet for others, the locations may be approximate and subject to change. DMME is continuing to modify the datasets included on this map, and the user is responsible for ensuring that they have the most current information. This map is designed for use at the designated scale and should not be enlarged or used for making site-specific decisions. The user should be aware of possible errors in scale, resolution, and positional accuracy. Distribution of this map is intended for informational purposes and should not be considered authoritative for navigation, engineering, legal, or other site-specific uses.

Data Sources:

Geology: VA Division of Mineral Resources (DMR), Geologic Map of Virginia and Expanded Explanation (1993), scale 1:500,000.
 Active Mines: VA Division of Mineral Mining, scale 1:24,000.
 Historic Mines: DMR Mineral Resources of Virginia database, scale 1:24,000.