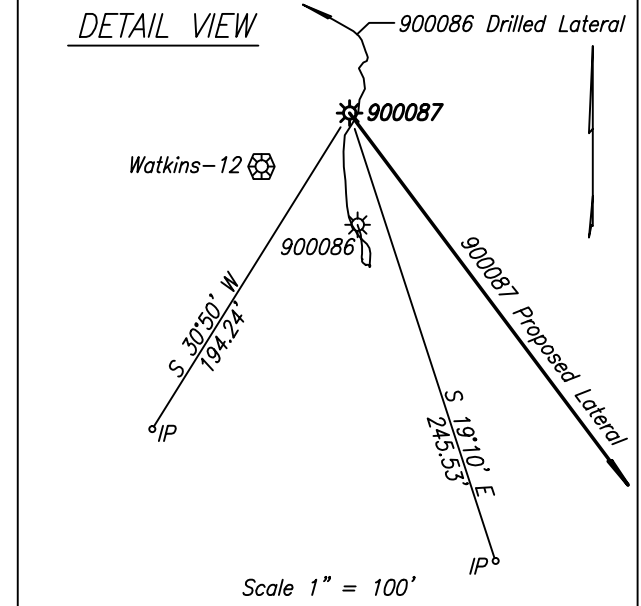


*Distance to Offsetting Huron Producing Wells*

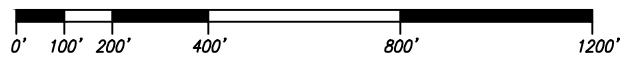
Offset Well / Lateral Number	Distance	Bearing	Measured From
900086 Production Packer	495'	N 50°25' W	900087 Production Packer
826113 (Approx.)	1,315'	N 53°12' E	900087 Lateral
826112 (Approx.)	1,315'	S 53°12' W	900087 Lateral
826114 (Approx.)	1,837'	N 30°27' W	900087 Production Packer

*Distance to Offsetting Wells (Non Huron)*

Offset Well / Lateral Number	Distance	Bearing	Measured From
Watkins-12	284'	N 47°19' W	900087 Production Packer
Poplar Gap-20	2,221'	N 38°16' W	900087 Production Packer
Poplar Gap-32	1,857'	N 05°49' W	900087 Production Packer
Watkins-5	1,210'	N 53°12' E	900087 Lateral
Lovers Gap-125	1,022'	N 53°12' E	900087 Lateral
900001	167'	N 53°12' E	900087 Lateral
Lovers Gap-43	1,780'	N 86°42' E	900087 TD
Lovers Gap-42	722'	S 73°31' E	900087 TD
Lovers Gap-44	1,735'	S 58°16' E	900087 TD
Lovers Gap-34	347'	S 53°12' W	900087 Lateral
Lovers Gap-33	1,399'	S 53°12' W	900087 Lateral
Watkins-11	803'	S 53°12' W	900087 Lateral
Watkins-13	1,792'	S 53°12' W	900087 Lateral
Watkins-14	1,825'	S 82°11' W	900087 Production Packer



- Mineral Line
- Surface Line
- Unit Grid Exterior
- Base Drainage Area
- ⊗ Existing CBM Well
- ⊙ Existing Conventional Well



Note 1: The boundary lines shown hereon are based on deeds, plats and maps of record and do not depict a current boundary survey.

Note 2: The well will be drilled within 10' of the permitted coordinates.

Note 3: Information regarding sub-terrainian aspects of wells provided by Range Resources-Pine Mountain, Inc.

Well elevation determined by GPS survey from HARN Monument P-424

Note: See Attached Tract Ownership Information Schedule

Surface Coordinates

Well Coordinates: (VA St. Plane S. Zone, NAD 83 (93))  
 N 3,629,526.89 E 10,414,573.17

Well Coordinates: (Clinchfield Coal Co.)  
 N 48,768.95 E 62,009.24

Estimated Landing Point Vertical Depth: 5,930'  
 Estimated Total Measured Depth of Lateral: 10,187'

Area of Unit = 220 Ac.

WELL LOCATION PLAT (UNIT NAME: SWVH-1\_A-R201-C490\_HR) DGO FILE NO.: BU-4803

COMPANY Range Resources-Pine Mountain, Inc. WELL NAME AND NUMBER 900087  
 TRACT NO. Watkins ELEVATION 2,003.63' QUADRANGLE Prater  
 COUNTY Buchanan DISTRICT Prater SCALE \*See Bar Scale\* DATE 1-11-2012

This Plat is a new plat \_\_\_; an updated plat x; or a final location plat \_\_\_  
 ⊕ Denotes the location of a well on United States topographic Maps, scale 1 to 24,000, latitude and longitude lines being represented by border lines as shown.

**PRELIMINARY**  
 Licensed Professional Engineer or Licensed Land Surveyor